

# ARMOUR PROOF COATINGS

CLASSIFICATION: MODULAR ROOF

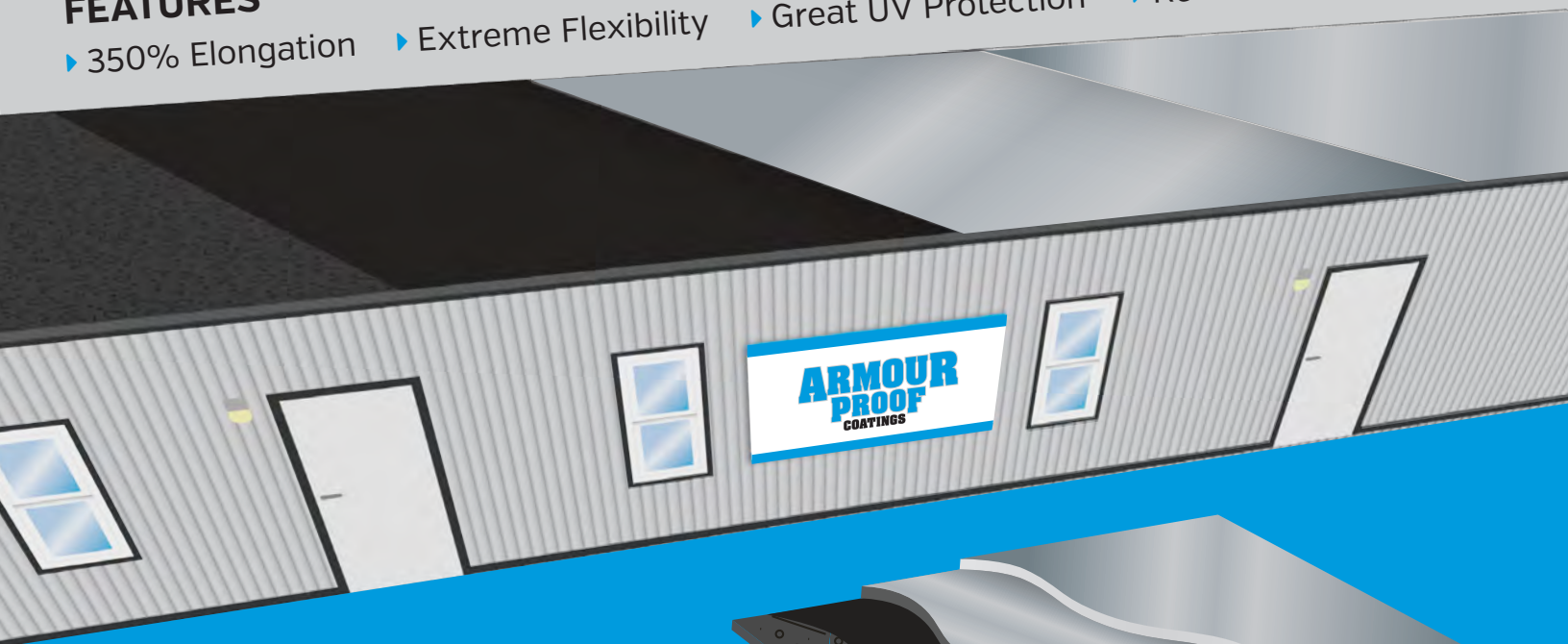
## Moisture Cure Polyurethane System

Substrate: Single-Ply (EPDM)

Finish Color: Silver

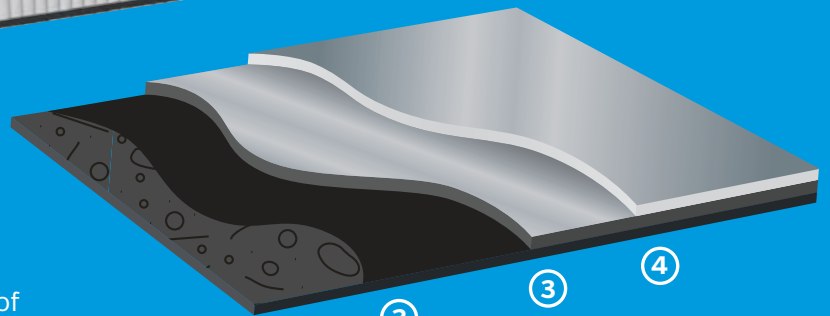
### FEATURES

- ▶ 350% Elongation
- ▶ Extreme Flexibility
- ▶ Great UV Protection
- ▶ Resists Ponding Water



### SPECIFICATIONS

- ① Apply **AP-1200 EPDM Rinseable Primer** to the entire surface at a rate of 300 – 400 square feet per gallon. Allow 10-15 minutes to activate before pressure washing with a minimum of 2000 PSI.
- ② The surface should be clean and dry before the installation of the Armour-Ply System.
- ③ Apply one coat of **AP-5100 Moisture Cure Urethane** at a rate of 1.00 – 1.25 gallons per 100 square feet. Allow 2-6 hours to dry.
- ④ Apply a second coat of **AP-5100 Moisture Cure Urethane** at a rate of 1.00 – 1.25 gallons per 100 square feet. Allow 2-6 hours to dry.



Refer to the Armour Proof Coatings website below for detailed instructions on how to prepare for the specific substrate and coating system.